



2027

ABOUT



satori

SINCE 1972

SATORI has been a leading supplier to the bicycle industry over 50 years, with a focus on providing innovative handlebars, stems and seat posts to bicycle assemblers and consumers globally.

As could be expected from one of the world's largest component manufacturers, we are equipped with world-class research, design and production facilities, as well as the experience to back it up. Above all though, a passion for riding is the driving force behind our company direction and it is this deep rooted 'bicycle-minded' philosophy that fuels the development of exciting new ideas at SATORI Taiwan.

STEMS

- 6 ICR STEMS
- 18 ADJUSTABLE STEMS
- 19 RIGID STEMS
- 20 TOOL-FREE STEMS
- 22 SHOCK ABSORBING STEMS
- 24 RISER STEMS
- 25 TURNABLE STEM

HANDLEBARS

- 26 MTB HANDLEBARS
- 30 TREKKING HANDLEBARS
- 34 ROAD / GRAVEL HANDLEBARS
- 39 LIGHT INTEGRATED HANDLEBARS
- 40 COCKPIT HANDLEBARS
- 41 KIDS SECTION

SEATPOSTS

- 42 SUSPENSION SEATPOSTS
- 46 SPECIAL SEATPOST
- 47 TELESCOPING SEATPOSTS
- 48 DROPPER POSTS
- 50 SEATPOSTS

CARBON

- 53 CARBON SERIES

ACCESSORIES

- 54 ACCESSORIES
- 56 SPECIFICATION



STEMS



ADJUSTABLE
Easy adjustment.



TOOL FREE
Easy adjustment with your hands.



EASY TURN
One Side Turn.



EASY TURN
One Side Turn.



DUO
Two adjustments in one.



S³
SATORI square system



ICR
Internal Cable Routing

HANDLEBARS



BUTTED TECHNOLOGY
Light weight and high strength.



WING SHAPE
Comfort hand grip.



FLARED DROP



STRONG & STIFF
Aggressive test



Ø35
35mm bar bore

SEATPOSTS



ANTI-SIDEPLAY
No Side-play adjustment for suspension and dropper system



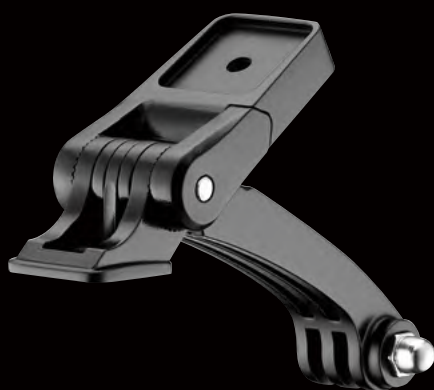
COIL SPRING





PATENTED

S³ - SATORI SQUARE SYSTEM



S³ PARTNERS





AIX-525



AZX-581



AZX-585



AZX-727



HS-HL-01



NO.69 / 56 / SRS /
Middle / HL-Delta



TK1566PS1



TK1566PS2



RF-SAT1



RF-SAT2



STEMS

HANDLEBARS

SEATPOSTS

CARBON SERIES

ACCESSORIES

LIGHT PARTNERS





BELUGA



BOSCH Kiox 400C

NEW

BELUGA



MAT BK

- This high-performance adjustable stem is designed specifically for OEMs seeking clean integration and flexibility in e-bike assembly. It offers full compatibility with the BOSCH 400C display, which mounts directly into the stem without additional brackets, reducing cockpit complexity and part count.

Approved for ASTM Cat. 2 ETK 180Kg

MATERIAL	FORGED
EXTENSION	90 mm
BAR BORE	Ø31.8 mm
STEERER	Ø28.6 mm
ANGLE	0° ~ 50°
STEERER DEPTH	39 mm
WEIGHT	656 g

OPTIONAL

For more accessories please refer to P.54



S³ ADAPTOR



S³ LIGHT MOUNT





STEMS

HANDLEBARS

SEATPOSTS

CARBON SERIES

ACCESSORIES



SLINGSHOT



Including Top Cover with S³ interface

NEW

SLINGSHOT



MAT BK

- Designed to pair with handlebars integrating Supernova's Starstream light unit, Our Slingshot stem features stem angle adjustability and internal cable routing, and the wide-body design opens up possibilities for further accessory integration. Our patented S³ interface is capable of adapting a variety of phone case mounts, furthermore adding opportunities for a variety of accessories. In short, Slingshot is your best shot!!

Approved for ASTM Cat. 2 ETK 180Kg

MATERIAL	FORGED
EXTENSION	70 mm
BAR BORE	Ø31.8 mm
STEERER	Ø28.6 mm
ANGLE	0° ~ 90°
STEERER DEPTH	39 mm
WEIGHT	503 g



OPTIONAL



EL-045
Light mount for
SLINGSHOT



Compatible with
Kiox 300 display



Compatible with
Intuvia 100 display



S³ ADAPTOR



70 mm



80 mm



90 mm

Dual Adjustment. Full Integration. Smarter Cockpit.

• The MOBY DEE is a versatile, next-generation adjustable stem developed to meet the evolving needs of e-bike and premium urban bike design. Not only does it offer angle adjustability for rider comfort, but it also features SATORI's unique extension adjustment system—allowing the stem length to be set at 70mm, 80mm, or 90mm without changing components.

MOBY DEE



MAT BK

• **Approved for ASTM Cat. 2 ETK 180Kg**

MATERIAL	FORGED
EXTENSION	70 ~ 90 mm
BAR BORE	Ø31.8 mm
STEERER	Ø28.6 mm
ANGLE	0° ~ +90°
STEERER DEPTH	39 mm

ICR

ICR



Adjustable

S³S³

OPTIONAL

For more accessories please refer to P.54



696B CAP



KIOX 300 adaptor



INTUVIA 100 adaptor

S³ ADAPTOR



NEW
OPTIONAL :



Capability for the front brake cable housing to run through the fork steerer tube

PYTHON



MAT BK

Approved for ASTM Cat. 2 ETK 180Kg

MATERIAL	FORGED
EXTENSION	65 / 90 / 110 mm
BAR BORE	Ø31.8 mm
STEERER	Ø28.6 mm
ANGLE	0° ~ +90°
STEERER DEPTH	39 mm
WEIGHT	455.5 g (E:65)



OPTIONAL

For more accessories please refer to P.54



KIOX 300 adaptor

INTUVIA 100 adaptor

671B CAP

S³ ADAPTOR

CATAMARAN



MAT BK

Approved for ASTM Cat. 2 ETK 180Kg

MATERIAL	FORGED
EXTENSION	95 mm
BAR BORE	Ø31.8 (W/Shim) / Ø35 mm
STEERER	Ø28.6 mm
ANGLE	0° ~ +90°
STEERER DEPTH	39 mm
WEIGHT	604.5 g (Ø35 E:95)



OPTIONAL

Light mount for CATAMARAN



EL-018



STEMS

HANDLEBARS

SEATPOSTS

CARBON SERIES

ACCESSORIES

S³ CAP optional

Front brake cable with ICR

Special top cap allows easy to maintain the front brake cable through by special star nut.

Rear brake / Shift / Electronic cables with ICR

RANA



RANA

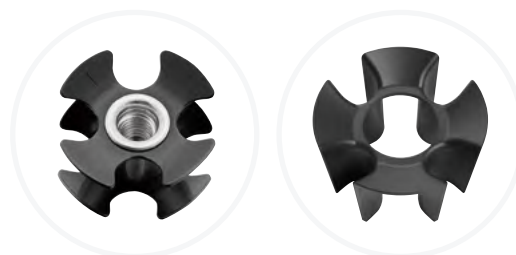


MAT BK

- Featuring ICR internal cable routing and capability for the front brake cable housing to run through the fork steerer tube, the Rana stem provides true fully concealed cable routing look. The removable top cap allows easy access to the front brake cable housing for assembling or maintenance.

Approved for ASTM Cat. 2 ETK 180Kg

MATERIAL	FORGED
EXTENSION	90 / 110 mm
BAR BORE	Ø31.8 mm
STEERER	Ø28.6 mm
ANGLE	+20°
STEERER DEPTH	39 mm
WEIGHT	309.5 g



including special starnut and protection cover

OPTIONAL

For more accessories please refer to P.54



KIOX 300 adaptor

INTUVIA 100 adaptor

S³ ADAPTOR

S³ CAP

EL-012 light
mount adaptor




NEW

SHORTY ICR



MAT BK

Approved for ASTM Cat. 4 EMTB 150Kg

MATERIAL	FORGED
EXTENSION	40 mm
BAR BORE	Ø31.8 / Ø35 mm
STEERER	Ø28.6 mm
ANGLE	0° ~ 90°
STEERER DEPTH	39 mm
WEIGHT	380.7 g (Ø31.8 mm)



ICR



S³



Adjustable



Ø35

HATCHBACK (ICR optional)



MAT BK

Approved for ASTM Cat. 2 ETK 180Kg

MATERIAL	FORGED
EXTENSION	70 / 90 / 110 mm (ICR: 60 / 80 / 100 mm)
BAR BORE	Ø31.8 mm
STEERER	Ø28.6 mm
ANGLE	0° ~ 90°
STEERER DEPTH	39 mm
WEIGHT	433.5 g (90 mm)



ICR



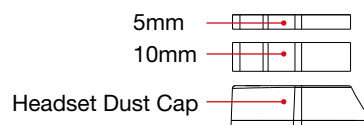
S³



Adjustable

OPTIONAL

For more accessories please refer to P.54



KIOX 300 adaptor



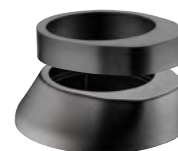
INTUVIA 100 adaptor



671B CAP



S³ ADAPTOR

EL-010 & SPR-010
Headset dust cap and Spacer



NEW VIPER



MAT BK

MATERIAL	3D FORGED
EXTENSION	60 / 70 / 80 / 90 / 100 / 110 / 120 mm
BAR BORE	Ø31.8 mm
STEERER	Ø28.6 mm
ANGLE	-7°
STACK	33 mm
WEIGHT	213.5 g (E:100)

ICR
ICR

S³
S³

OPTIONAL

For more accessories please refer to P.54

S³ CAPEL-012 Light
mount adaptorS³ ADAPTOR

VIPER 0



MAT BK

Approved for ASTM Cat. 3 EXC

MATERIAL	3D FORGED
EXTENSION	45 / 60 / 80 mm
BAR BORE	Ø31.8 mm
STEERER	Ø28.6 mm
ANGLE	0°
STACK	42 mm
WEIGHT	235.5 g (E:80)

ICR
ICR

S³
S³

OPTIONAL

For more accessories please refer to P.54

S³ CAPEL-012 Light
mount adaptorS³ ADAPTOR



SIDEWINDER



MAT BK

MATERIAL	3D FORGED
EXTENSION	80 / 90 / 110 mm
BAR BORE	Ø31.8 mm
STEERER	Ø28.6 mm
ANGLE	+7°
STACK	40 mm
WEIGHT	246 g (E:100)

ICR

S³

FASTBACK 20



MAT BK

Approved for ASTM Cat. 5 ADV. PLUS	
MATERIAL	3D FORGED
EXTENSION	50 / 70 / 90 / 110 mm
BAR BORE	Ø31.8 mm
STEERER	Ø28.6 mm
ANGLE	+20°
STEERER DEPTH	40 mm
WEIGHT	246.5 g (E:70)

ICR

S³

FASTBACK 35



MAT BK

Approved for ASTM Cat. 5 ADV. PLUS	
MATERIAL	3D FORGED
EXTENSION	70 / 90 / 110 mm
BAR BORE	Ø31.8 mm
STEERER	Ø28.6 mm
ANGLE	+35°
STEERER DEPTH	40 mm
WEIGHT	259.5 g

ICR

S³

OPTIONAL

For more accessories please refer to P.54



KIOX 300 adaptor



INTUVIA 100 adaptor



671B CAP



EL-019
Transition spacer for use
with ACROS AZX-581

S³ ADAPTOR



NEW LIVE



MAT BK

MATERIAL	FORGED
EXTENSION	35 / 45 mm
BAR BORE	Ø35 mm
STEERER	Ø28.6 mm
ANGLE	0°
STACK	40 mm
WEIGHT	129 g (E:35)



ICR

Ø35

OPTIONAL

For more accessories
please refer to P.54



EL-012 Light
mount adaptor



VIPER 0 35



MAT BK

MATERIAL	FORGED
EXTENSION	45 mm
BAR BORE	Ø35 mm
STEERER	Ø28.6 mm
ANGLE	0°
STACK	42 mm
WEIGHT	179 g (E:45)



ICR

Ø35

OPTIONAL

For more accessories
please refer to P.54



EL-012 Light
mount adaptor



NEW URSA



MAT BK

Approved for ASTM Cat. 4 EMTB 150Kg	
MATERIAL	FORGED
EXTENSION	35 / 50 mm
BAR BORE	Ø31.8 / Ø35 mm
STEERER	Ø28.6 mm
ANGLE	0°
STACK	41 mm
WEIGHT	224 g (Ø31.8 x E:50)



ICR

Ø35

OPTIONAL

For more accessories
please refer to P.54



EL-012 Light
mount adaptor



The URSA is upgraded for enhanced compatibility with the latest ACROS ICR system, delivering cleaner cable routing and a sleeker front-end setup.



STEMS

HANDLEBARS

SEATPOSTS

CARBON SERIES

ACCESSORIES



STEMS

HANDLEBARS

SEATPOSTS

CARBON SERIES

ACCESSORIES



OPTIONAL : EL-025
(S³ adaptor)

UP3e



MAT BK

MATERIAL	3D FORGED
EXTENSION	65 / 90 / 110 mm
BAR BORE	Ø31.8 mm
STEERER	Ø28.6 mm
ANGLE	0° ~ +90°
STEERER DEPTH	39 mm
WEIGHT	390 g (E:90)



including special
starnut and protection
cover

UP3



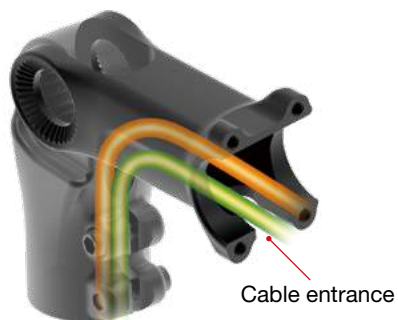
MAT BK

MATERIAL	3D FORGED
EXTENSION	65 / 90 / 110 mm
BAR BORE	Ø31.8 mm
STEERER	Ø28.6 mm
ANGLE	0° ~ +90°
STEERER DEPTH	39 mm
WEIGHT	400 g (E:110)



OPTIONAL

For more accessories please refer to P.54



Cable entrance



KIOX 300 adaptor



INTUVIA 100 adaptor



379 CAP



380F CAP



RIGID STEMS



TURN-UP



MATERIAL	3D FORGED
EXTENSION	100 / 120 mm
BAR BORE	Ø25.4 / Ø31.8 mm
STEERER	Ø28.6 mm
ANGLE	0° ~ +90° / -80° ~ +80°
STACK	42 mm
WEIGHT	268 g (Ø31.8 x E:100)



Adjustable



Duo

COBRA



MATERIAL	FORGED
EXTENSION	100 mm
BAR BORE	Ø25.4 / Ø31.8 mm
STEERER	Ø28.6 mm
ANGLE	-40° ~ +80° / +50° ~ -50°
STACK	41 mm
WEIGHT	306 g (Ø31.8)



Adjustable



Duo

SCORPION



MATERIAL	3D FORGED
EXTENSION	45 / 60 / 80 mm
BAR BORE	Ø31.8 mm
STEERER	Ø28.6 mm
ANGLE	-7°
STACK	40 mm
WEIGHT	144.5 g (E:80)

MAMBA



MATERIAL	3D FORGED
EXTENSION	80 / 90 / 100 / 110 / 120 mm
BAR BORE	Ø31.8 mm
STEERER	Ø28.6 mm
ANGLE	-7°
STACK	38 mm
WEIGHT	136 g (E:100)

STEMS

HANDLEBARS

SEATPOSTS

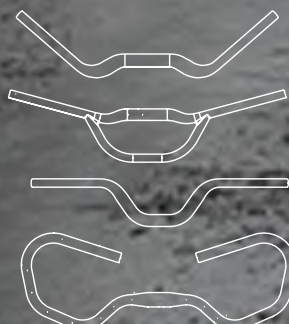
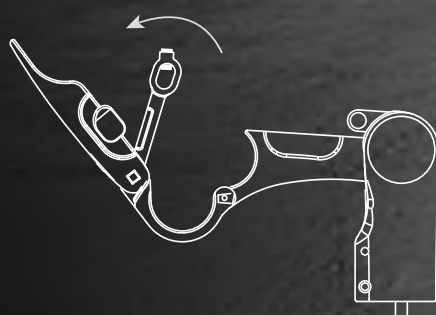
CARBON SERIES

ACCESSORIES



EZ-X ICR

- Easy upper lever adjustment with SATORI safety button.
- Simple but powerful QR mechanism with pre-adjust screw for handlebar tolerance control.
- One-piece cold forged parts for lighter weight.
- Serrated and precisely machined handlebar clamp for powerful clamping.
- Inline pivot adjustment center for the most upright comfort position.
- Compatible with ICR (Internal Cable Routing)




NEW

EZ-X ICR



MAT BK

MATERIAL	FORGED
EXTENSION	90 mm
BAR BORE	Ø31.8 mm
STEERER	Ø28.6 mm
ANGLE	0° ~ +80°
STEERER DEPTH	40 mm
WEIGHT	509 g (E:110)



ICR



S³



Adjustable



Tool Free

EZ-X



MAT BK

MATERIAL	FORGED
EXTENSION	90 mm
BAR BORE	Ø31.8 mm
STEERER	Ø28.6 mm
ANGLE	0° ~ +80°
STEERER DEPTH	40 mm
WEIGHT	553.5 g (E:110)



S³



Adjustable



Tool Free

EZ3



SHINY BK



SHINY SV



MAT BK

MATERIAL	FORGED
EXTENSION	110 mm
BAR BORE	Ø25.4 / Ø31.8 mm
STEERER	Ø25.4 mm
ANGLE	0° ~ +80°
LENGTH	180 / 230 mm
WEIGHT	541 g (Ø25.4 x L:180)



S³



Adjustable



Tool Free



MODERATOR



NEW

MODERATOR



MAT BK

- Deleting road vibration while maintaining stability and control all the way, come gravel or rough paths, the Moderator takes the buzz off your ride. Dampening can be fine-tuned with different elastomers, done simply with a 4mm hex key.

Approved for ASTM Cat. 1 ROAD 140Kg

MATERIAL	3D FORGED
EXTENSION	80 / 95 / 110 mm
BAR BORE	Ø31.8 mm
STEERER	Ø28.6 mm
ANGLE	0°
STACK	50 mm
WEIGHT	350 g (E:110)



ELASTOMERS WITH DIFFERENT HARDNESS AVAILABLE AS OPTION.



SOFT



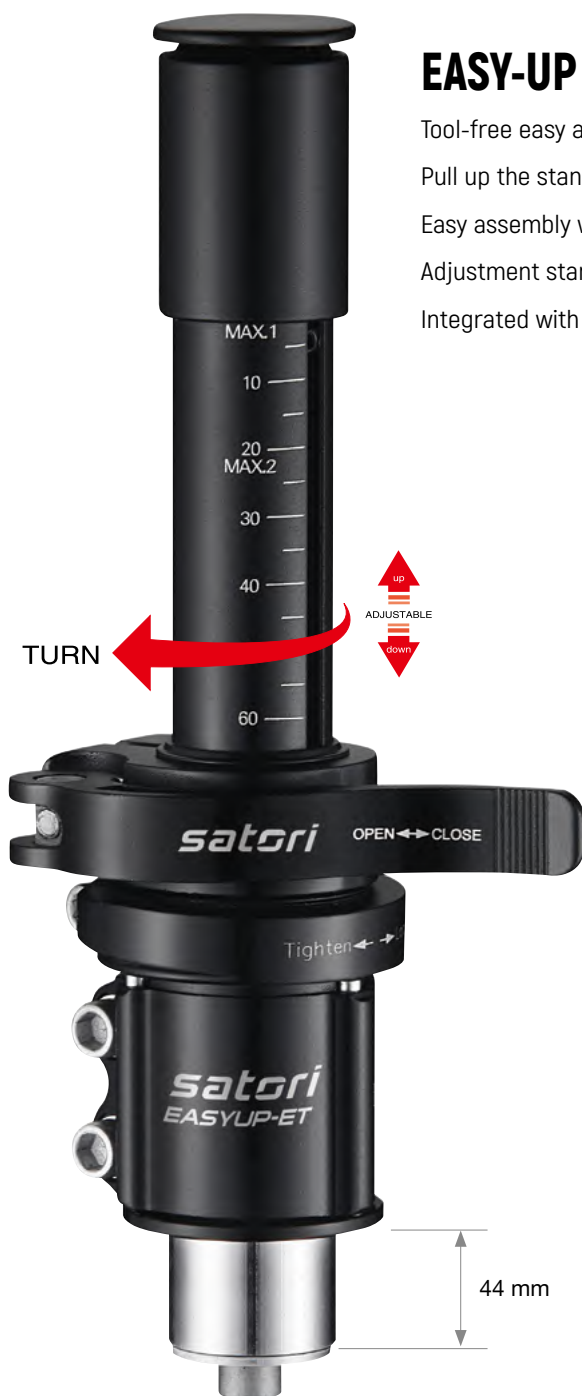
FIRM

OPTIONAL

For more accessories please refer to P.54


S³ ADAPTOR

EL-012 Light
mount adaptor



EASY-UP ET

Tool-free easy adjustment of both handlebar height and its side folding.

Pull up the stanchion at top position. Turn it to side and push down the bottom.

Easy assembly with the fork tube w/o additional machining of the fork tube.

Adjustment stanchion compatible with fork tube ID 24.4mm to 25.4mm.

Integrated with tightening ring for the fork tube and head parts.



EASY-UP ET



MATERIAL	AL6061
BASE DIAMETER	Ø28.6 mm
HEIGHT	110 ~ 180 mm / 110 ~ 210 mm
STEM TRAVEL	70 / 100 mm
WEIGHT	395.5 g (100 mm)



Tool Free

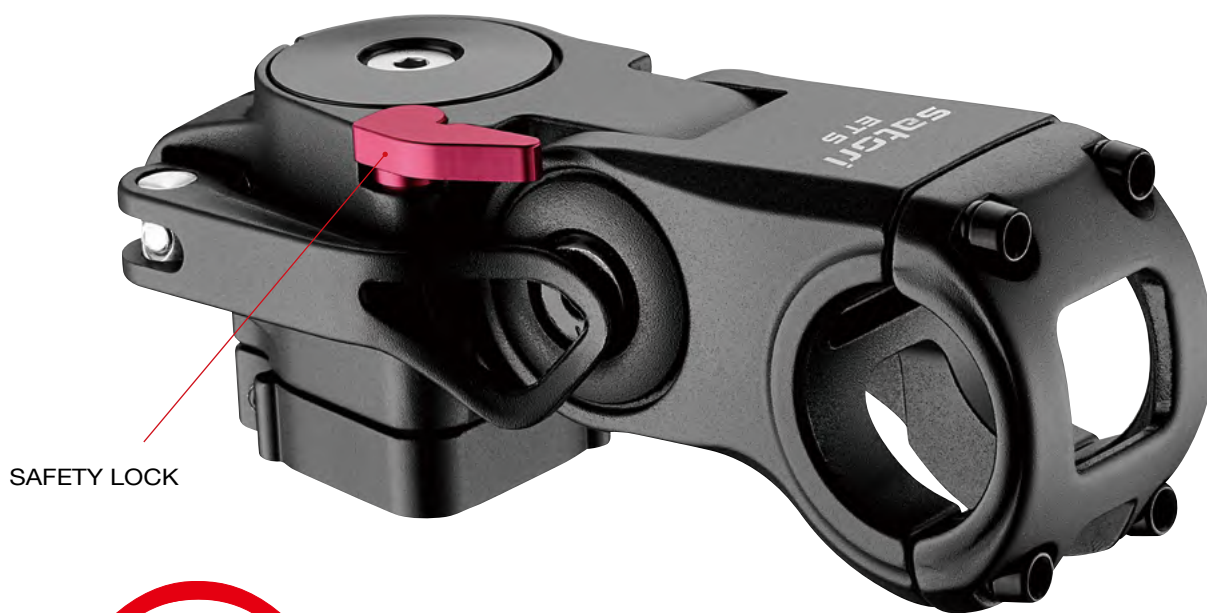


Turn

HEADS-UP 4



MATERIAL	AL6061
BASE DIAMETER	Ø28.6 mm
HEIGHT	117 mm
STEM ADJUSTER	10mm thick (1 spacer) 8mm thick (1 spacer) 5mm thick (2 spacer)
WEIGHT	240.5 g



SAFETY LOCK

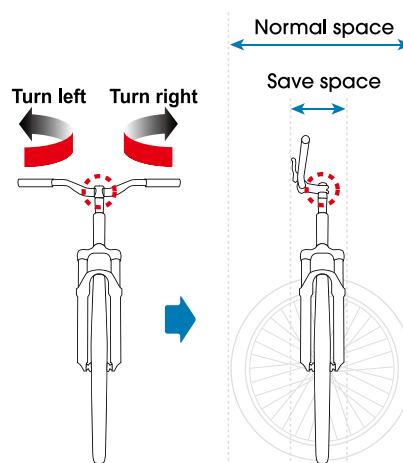


Fold. Adjust. Lock. Save Space.

· The Turing ET-5 is a multifunctional stem designed for compact storage and modern urban mobility. Its unique folding mechanism allows the handlebar to rotate left or right, saving space when parking in tight areas or mounting bikes on camper vans or transport racks.

NEW
ET5


MATERIAL	FORGED
EXTENSION	90 mm
BAR BORE	Ø31.8 mm
STEERER	Ø28.6 mm
ANGLE	10° ~ 60°
STACK	50 mm
WEIGHT	482 g



OPTIONAL

For more accessories please refer to P.54



671B CAP



KIOX 300 adaptor



INTUVIA 100 adaptor



S³ ADAPTOR



STEMS

HANDLEBARS

SEATPOSTS

CARBON SERIES

ACCESSORIES



Ø35



S&S

STRONG & STIFF

With an innovative new tube forming and butting process, we are able to achieve a whopping 35% increase in both strength and stiffness for our MTB handlebars.

EVO 35 MAX



EVO 35 FLAT



EVO 35 MAX



MAT BK

MATERIAL	AL7075
BAR BORE	Ø35 mm
WIDTH	720 / 740 / 760 / 780 / 800 mm
RISE	55 mm
UP SWEEP	5°
BACK SWEEP	8° / 15°
WEIGHT	415 g



B-Tech



Ø35



S&S

EVO 35 FLAT



MAT BK

MATERIAL	AL7075
CENTER DIA	Ø35 mm
WIDTH	760 / 780 / 800 mm
RISE	6 mm
BACK SWEEP	8°
WEIGHT	331.5 g (W: 780)



B-Tech



Ø35



S&S



STEMS

HANDLEBARS

SEATPOSTS

CARBON SERIES

ACCESSORIES

EVO 35 SMALL

EVO 35 MEDIUM

EVO 35 LARGE

OPTIONAL :
SHIMANO Di2

EVO 35 SMALL



MAT BK

EVO 35 MEDIUM



MAT BK

EVO 35 LARGE



MAT BK

**APPROVED ASTM 4
ADVANCED PLUS XXL**

MATERIAL	AL7075
CENTER DIA	Ø35 mm
WIDTH	760 / 780 / 800 mm
RISE	15 mm
UP SWEEP	5°
BACK SWEEP	7°
WEIGHT	321 g (W:780)



B-Tech



Ø35



S&S

MATERIAL	AL7075
CENTER DIA	Ø35 mm
WIDTH	760 / 780 / 800 mm
RISE	25 mm
UP SWEEP	5°
BACK SWEEP	7°
WEIGHT	372.5 g (W:780)



B-Tech



Ø35



S&S

MATERIAL	AL7075
CENTER DIA	Ø35 mm
WIDTH	760 / 780 / 800 mm
RISE	35 mm
UP SWEEP	5°
BACK SWEEP	8°
WEIGHT	362.5 g (W:780)



B-Tech



Ø35



S&S



DEVIANT 1



DEVIANT 2



DEVIANT 3

DEVIANT 1



MAT BK

DEVIANT 2



MAT BK

DEVIANT 3



MAT BK

- For Downhill and Enduro riding
Light weight but good strength against heavy impact

		Approved for ASTM Cat. 3 EXC	
MATERIAL	AL7050	AL7050	AL7050
CENTER DIA	Ø31.8 mm	Ø31.8 mm	Ø31.8 mm
WIDTH	680 / 700 / 720 / 740 / 760 / 780 / 800 mm	680 / 700 / 720 / 740 / 760 / 780 / 800 mm	680 / 700 / 720 / 740 / 760 / 780 / 800 mm
RISE	10 mm	20 mm	30 mm
BACK SWEEP	7°	7°	7°
WEIGHT	292 g (W:680)	372 g (W:780)	378 g (W:780)



B-Tech



B-Tech



B-Tech



Allow 2 cables each side

DEVIANT 2 COVER

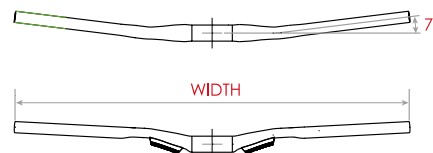


MAT BK

MATERIAL	AL6066	UP SWEEP	3°
BAR BORE	Ø31.8 mm	RISE	20 mm
WIDTH	760 / 780 / 800 mm	WEIGHT	350 g (W:780)
BACK SWEEP	7°		



B-Tech





STEMS

HANDLEBARS

SEATPOSTS

CARBON SERIES

ACCESSORIES



HORIZON BOW



DEVIANT BOW



FALCON

OPTIONAL :
SHIMANO Di2

HORIZON BOW



MAT BK

DEVIANT BOW



MAT BK

FALCON



MAT BK

Approved for ASTM Cat. 2 ETK

MATERIAL	AL6061	AL6061	AL6061
CENTER DIA	Ø31.8 mm	Ø31.8 mm	Ø31.8 mm
WIDTH	620 / 640 / 660 / 680 / 700 / 720 / 740 / 760 / 780 mm	620 / 640 / 660 / 680 / 700 / 720 / 740 / 760 / 780 mm	620 / 640 / 660 / 680 / 700 720 / 740 / 760 mm
RISE	7 mm	12 mm	0 mm
BACK SWEEP	9°	9°	15°
WEIGHT	239 g (W:700)	312 g (W:780)	351 g (W:760)



B-Tech



B-Tech



B-Tech



FULL CITY 100

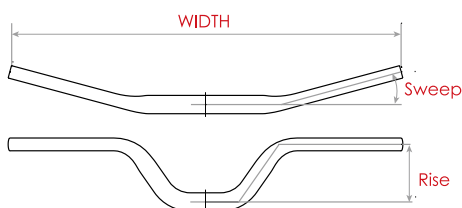


MAT BK

- Super high rise handlebar suitable for the E-SUV, and also passed ISO-M
- MATERIAL** AL6066
- BAR BORE** Ø31.8 mm
- WIDTH** 660 / 680 / 700 mm
- RISE** 100 mm
- BACK SWEEP** 15°
- WEIGHT** 366.5 g (W:680)



B-Tech



FULL CITY

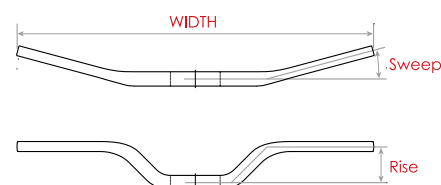


MAT BK

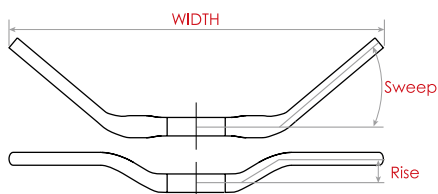
- MATERIAL** AL6066
- BAR BORE** Ø31.8 mm
- WIDTH** 660 / 680 / 700 mm
- RISE** 80 mm
- BACK SWEEP** 15° / 30°
- WEIGHT** 370 g (W:700)



B-Tech



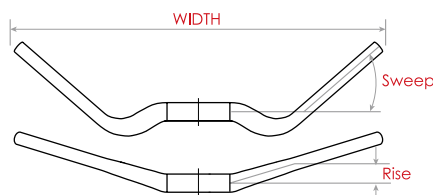
NOIRETTE SEAGULL



MATERIAL	AL6061
BAR BORE	Ø31.8 mm
WIDTH	630 / 660 / 680 mm
RISE	40 mm
BACK SWEEP	40°
WEIGHT	320 g (W:630)



NOIRETTE PLUS WS



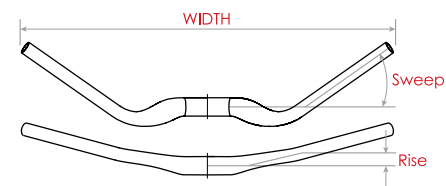
- Light weight and elegant for relaxed lifestyle riding. Flat wing shape with smooth transition from 31.8mm bar clamp for good looks & better grip. 110mm middle section for clamp-on accessories.

MATERIAL	AL6061
CENTER DIA	Ø31.8 mm
WIDTH	630 / 660 mm
RISE	34 mm
BACK SWEEP	41°
WEIGHT	331.5 g (W:660)



WS
FLAT, SMOOTH WING SHAPE

NOIRETTE



MATERIAL	AL6061
BAR BORE	Ø31.8 mm
WIDTH	600 / 630 mm
RISE	21 mm (35°) / 17 mm (15°)
BACK SWEEP	35° / 15°
WEIGHT	296.5 g (W:630x35°)





STEMS

HANDLEBARS

SEATPOSTS

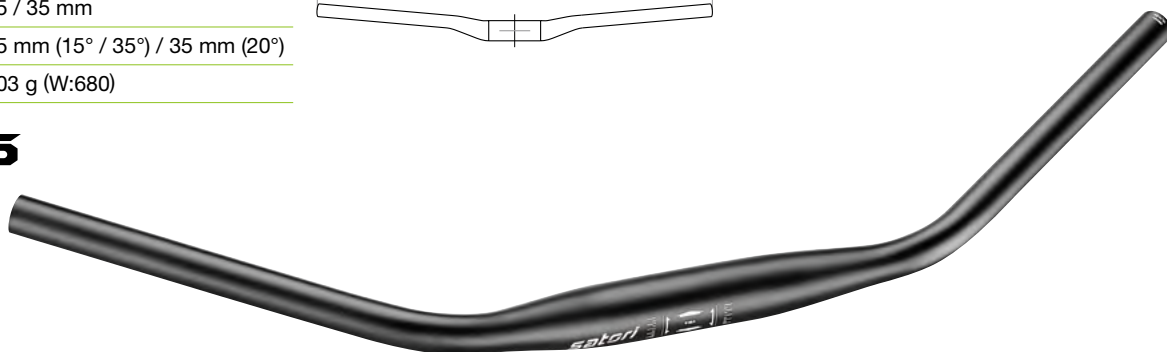
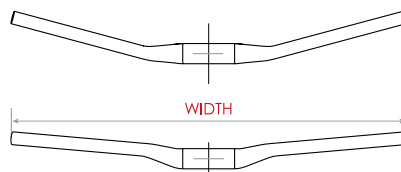
CARBON SERIES

ACCESSORIES

NOIR 35



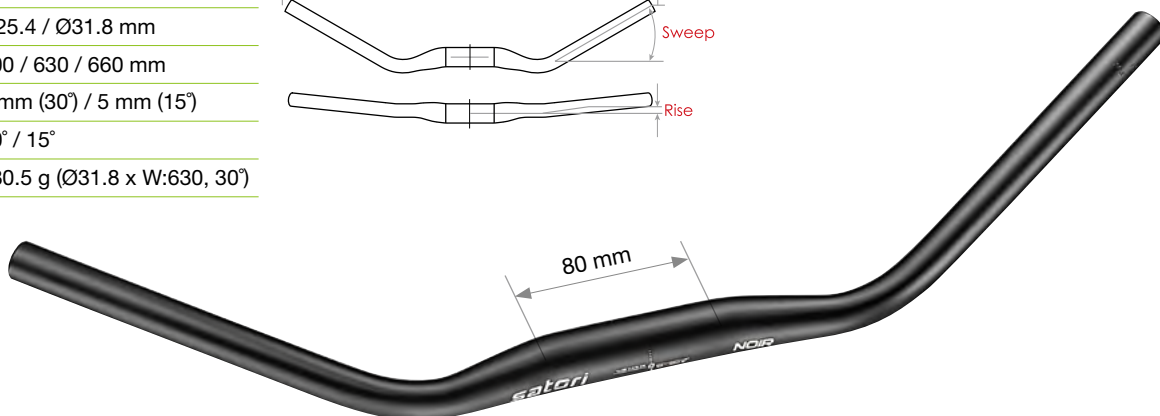
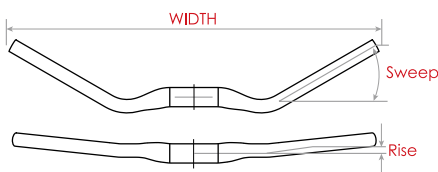
MATERIAL	AL6061
BAR BORE	Ø35 mm
WIDTH	680 / 700 / 720 mm
RISE	15 / 35 mm
BACK SWEEP	15 mm (15° / 35°) / 35 mm (20°)
WEIGHT	303 g (W:680)



NOIR



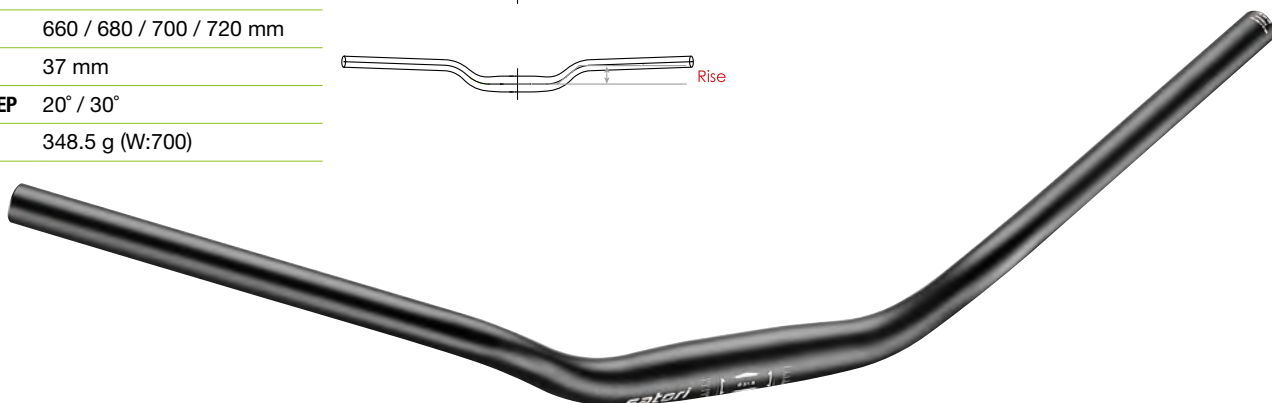
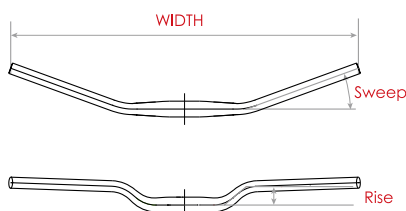
MATERIAL	AL6061
CENTER DIA	Ø25.4 / Ø31.8 mm
WIDTH	600 / 630 / 660 mm
RISE	7 mm (30°) / 5 mm (15°)
BACK SWEEP	30° / 15°
WEIGHT	280.5 g (Ø31.8 x W:630, 30°)



ROXETTA



Approved for ASTM Cat. 2 ETK	
MATERIAL	AL6061
CENTER DIA	Ø31.8 mm
WIDTH	660 / 680 / 700 / 720 mm
RISE	37 mm
BACK SWEEP	20° / 30°
WEIGHT	348.5 g (W:700)

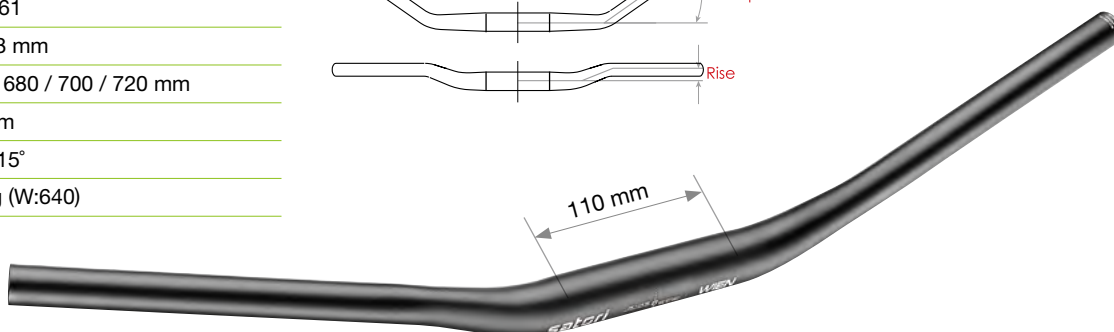
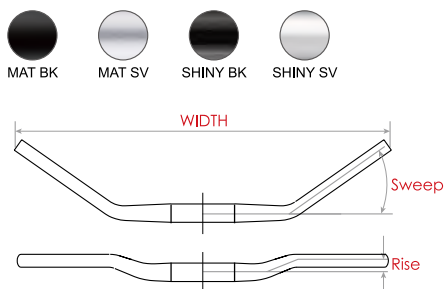


WIEN

- Relaxing design for lifestyle riding.

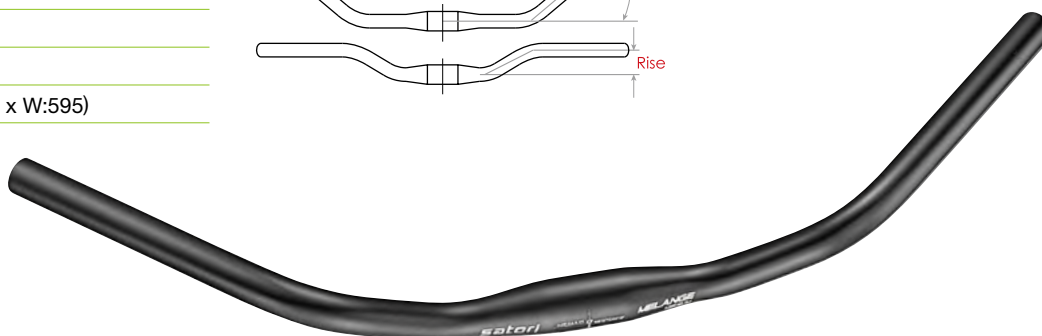
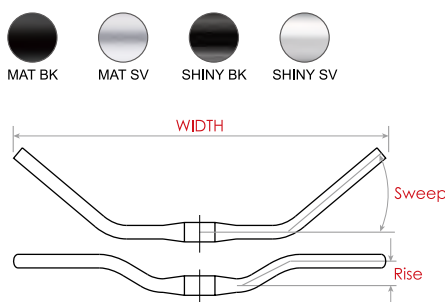
- Approved for ASTM Cat. 2 ETK

MATERIAL	AL6061
CENTER DIA	Ø31.8 mm
WIDTH	640 / 680 / 700 / 720 mm
RISE	20 mm
BACK SWEEP	35° / 15°
WEIGHT	307 g (W:640)



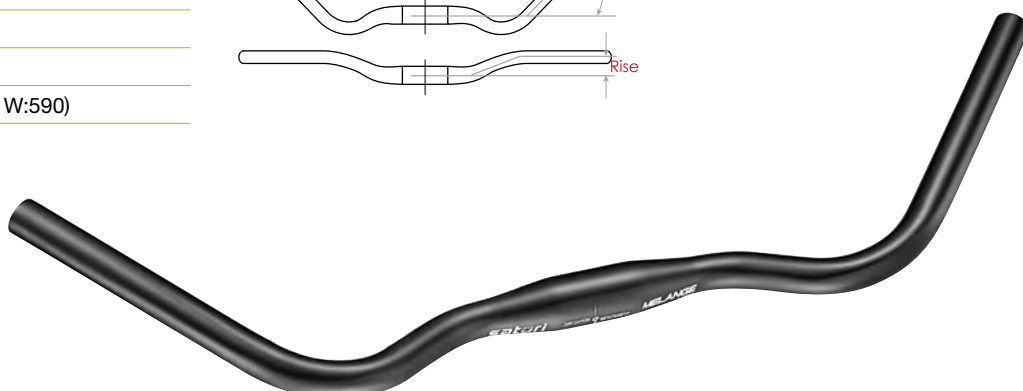
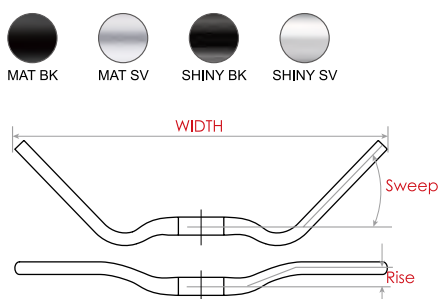
MELANGE MEDIUM

MATERIAL	AL6061
BAR BORE	Ø25.4 / Ø31.8 mm
WIDTH	560 / 570 / 595 / 615 mm
RISE	40 mm
BACK SWEEP	40°
WEIGHT	298 g (Ø31.8 x W:595)



MELANGE LOW

MATERIAL	AL6061
BAR BORE	Ø25.4 / Ø31.8 mm
WIDTH	590 / 610 / 630 mm
RISE	32 mm
BACK SWEEP	46°
WEIGHT	309 g (Ø31.8 x W:590)



STEMS

HANDLEBARS

SEATPOSTS

CARBON SERIES

ACCESSORIES



ROAD & GRAVEL



STEMS

HANDLEBARS

SEATPOSTS

CARBON SERIES

ACCESSORIES

NEW

SWIFT



MAT BK

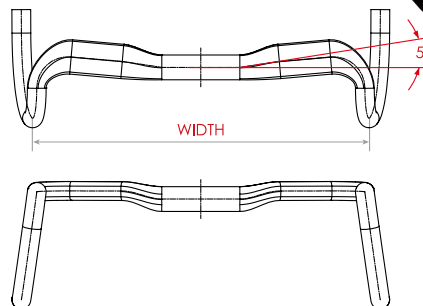
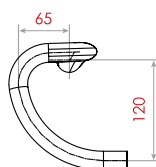
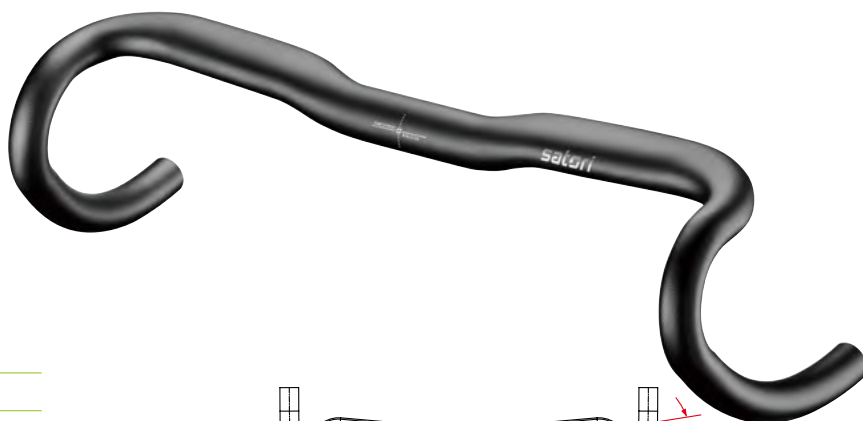
MATERIAL	AL6066
CENTER DIA	Ø31.8 mm
WIDTH	380 / 400 / 420 / 440 / 460 mm
DROP (D)	120 mm
REACH (R)	65 mm
FLARE	8° / 16°
WEIGHT	364 g (W:440)



B-Tech



ERGO


FLARED
DROP


RAPTOR



MAT BK

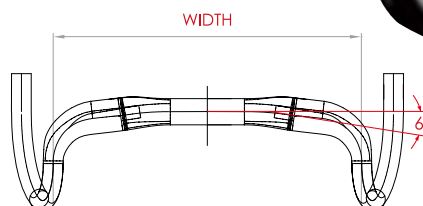
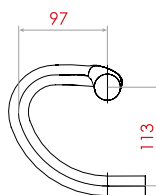
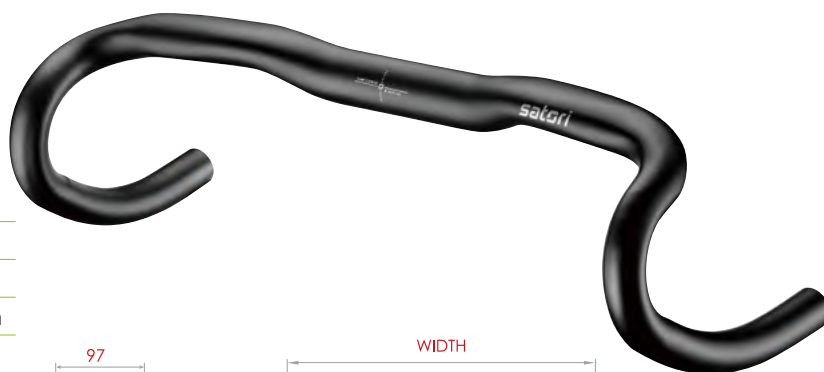
MATERIAL	AL6066
CENTER DIA	Ø31.8 mm
WIDTH	380 / 400 / 420 / 440 / 460 mm
DROP (D)	113 mm
REACH (R)	97 mm
FLARE	8° / 16°
WEIGHT	358.5 g (W:400)



B-Tech



ERGO


FLARED
DROP


S'AVANTE



MAT BK

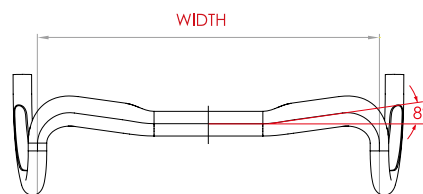
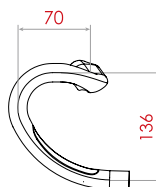
MATERIAL	AL6066
CENTER DIA	Ø31.8 mm
WIDTH	400 / 420 / 440 / 460 mm
DROP (D)	136 mm
REACH (R)	70 mm
FLARE	8° / 16°
WEIGHT	345 g (W:440)



B-Tech



ERGO


FLARED
DROP




X-RACE AERO



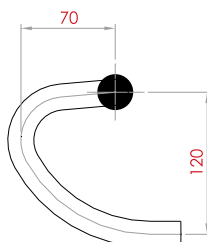
MATERIAL	AL6066
CENTER DIA	Ø31.8 mm
WIDTH	380 / 400 / 420 / 440 / 460 mm
DROP (D)	122 mm
REACH (R)	70 mm
FLARE	8° / 16°
WEIGHT	326.5 g (W:420, 8°)



X-RACE PRO



MATERIAL	AL6061
CENTER DIA	Ø31.8 mm
WIDTH	380 / 400 / 420 / 440 / 460 mm
DROP (D)	120 mm
REACH (R)	70 mm
FLARE	8° / 16°
WEIGHT	335 g (W:420, 8°)





STEMS

HANDLEBARS

SEATPOSTS

CARBON SERIES

ACCESSORIES

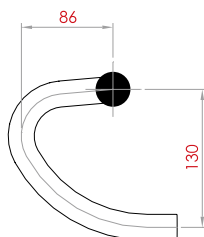


X-RACE



MAT BK

MATERIAL	AL6061
CENTER DIA	Ø31.8 mm
WIDTH	380 / 400 / 420 / 440 / 460 mm
DROP (D)	130 mm
REACH (R)	86 mm
FLARE	8° / 16°
WEIGHT	346 g (W:440, 8°)

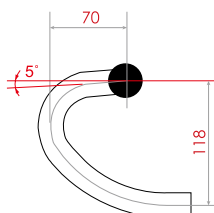
FLARED
DROP

FURIO PRO



MAT BK

MATERIAL	AL6061
CENTER DIA	Ø31.8 mm
WIDTH	380 / 400 / 420 / 440 mm
DROP (D)	118 mm
REACH (R)	70 mm
WEIGHT	298.5 g (W:420)





FIREBIRD

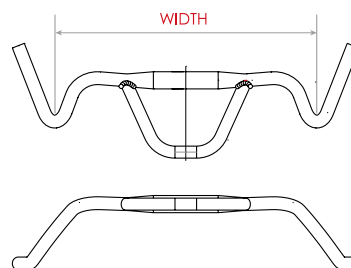


MAT BK

MATERIAL	AL6066
WIDTH	440 / 460 / 480 mm
BAR BORE	Ø31.8 mm
DROP	110 mm
REACH	76 mm
WELDING PART REACH	133 mm
FLARE	30°
WEIGHT	535 g (W:480)



B-Tech

FLARED
DROP

FALCON AERO

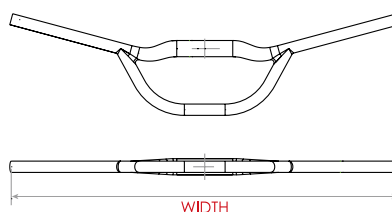


MAT BK

MATERIAL	AL6061
CENTER DIA	Ø31.8 mm
WIDTH	700 / 720 / 740 / 760 mm
RISE	0 mm
BACK SWEEP	15°
REACH	120 mm
WEIGHT	351 g (W:760)



B-Tech





SUPERNOVA

Supernova Starstream compatible

NEW

HORIZON STAR



MAT BK

	MATERIAL	AL6061
	BAR BORE	Ø31.8 mm
	WIDTH	640 / 660 / 680 / 700 / 720 mm
	RISE	5 mm
	SWEEP	8°
	WEIGHT	239 g (W:700)



B-Tech



NEW

DELTA STAR



MAT BK

	MATERIAL	AL6061
	EXTENSION	80 / 90 / 100 mm
	WIDTH	560 / 580 / 600 / 620 mm
	RISE	7 mm
	BACK SWEEP	9°
	WEIGHT	448 g (W:600 / E:80)



B-Tech



ICR



S³

OPTIONAL



SPR-010

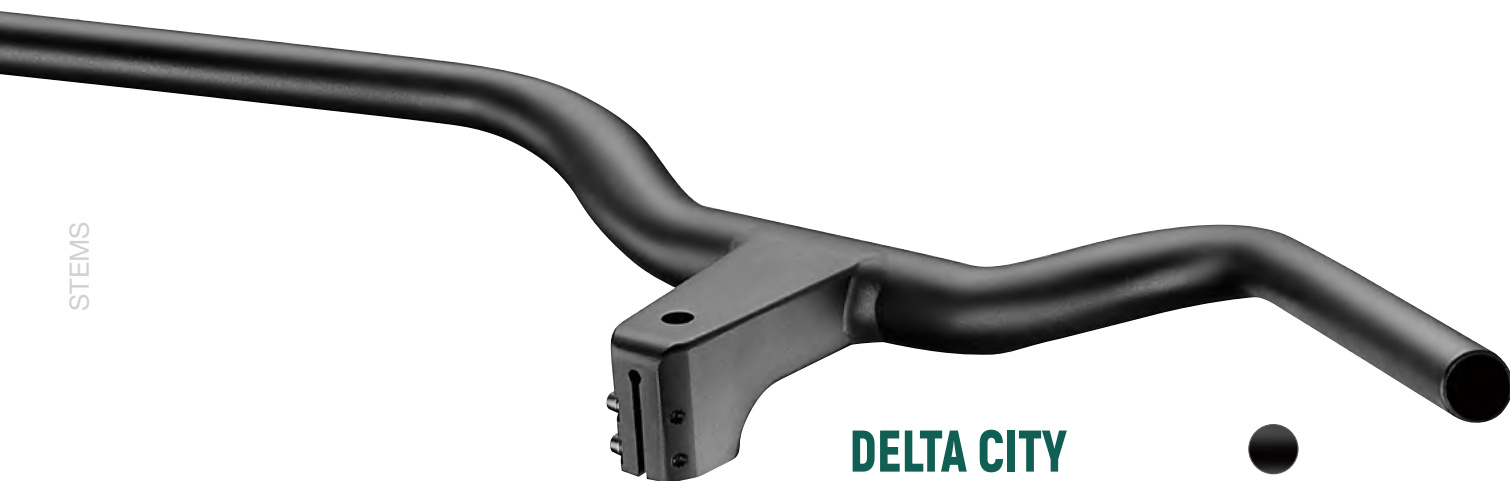


EL-010



EL-019

Transition spacer for use with ACROS AZX-581



DELTA CITY



MAT BK

MATERIAL	AL6061
EXTENSION	80 / 90 / 100 mm
WIDTH	600 / 630 mm
RISE	17 mm
BACK SWEEP	15 / 35°
WEIGHT	502 g (W:620 / E:80)



B-Tech



ICR



S³



DELTA URBAN



MAT BK

MATERIAL	AL6061
EXTENSION	80 / 90 / 100 mm
WIDTH	580 / 600 / 620 mm
RISE	5 mm
BACK SWEEP	9°
WEIGHT	448 g (W:600 / E:70)



B-Tech



ICR



S³

OPTIONAL



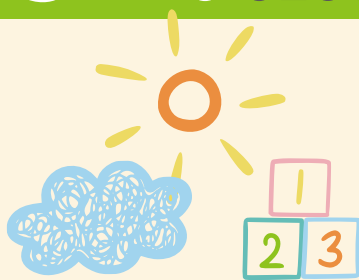
SPR-010



EL-010



EL-019
Transition spacer for use
with ACROS AZX-581



JUNIOR

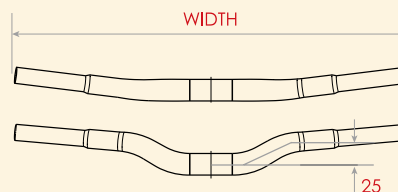


MAT BK

MATERIAL	AL6061
CENTER DIA	Ø25.4 mm
WIDTH	420 / 440 / 460 / 480 / 500 / 620 / 680 mm
RISE	25 mm
BACK SWEEP	7°
WEIGHT	209 g (W:420)



B-Tech



STEMS

HANDLEBARS

PRODIGY

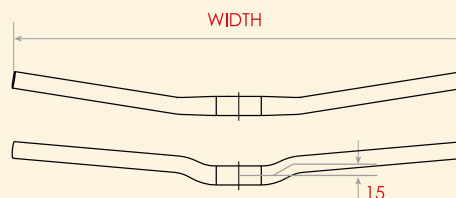


MAT BK

MATERIAL	AL6061
CENTER DIA	Ø25.4 mm
WIDTH	500 / 540 / 600 mm
RISE	15 mm
BACK SWEEP	9°
WEIGHT	234 g (W:600)



B-Tech



SEATPOSTS

CARBON SERIES

JOEY

NEW



MAT BK

Simple. Safe. Smart.
JOEY is a cleanly designed stem for kids' bikes, featuring front-facing bolts to reduce injury risk during impact. A thoughtful solution that puts young rider safety first.

MATERIAL	FORGED
EXTENSION	40 / 60 mm
BAR BORE	Ø25.4 mm
STEERER	Ø28.6 mm
ANGLE	15°
STEERER DEPTH	40 mm
WEIGHT	154 g



ACCESSORIES





SPRING BOX



SPRING BOX



MAT BK

MATERIAL	FORGED
OFF SET	24 mm
ANGLE	-5° ~ +18°
DIAMETER	Ø27.2 / Ø30.9 / Ø31.6 / Ø34.9 mm
LENGTH	350 / 400 / 450 mm
WEIGHT	753.5 g (Ø34.9)


Coil
SPRING

OPTIONAL

SPRING DIAMETER WITH DIFFERENT HARDNESS AVAILABLE AS OPTION

Standard : 60~80KG

Firm : 80~110Kg


BEATBOX



MAT BK

MATERIAL	FORGED
OFF SET	17 mm
ANGLE	-5° ~ +18°
DIAMETER	Ø27.2 / Ø30.9 / Ø31.6 / Ø34.9 mm
LENGTH	350 / 400 / 450 mm
WEIGHT	543 g

OPTIONAL



ELASTOMERS WITH DIFFERENT HARDNESS AVAILABLE AS OPTION.

Orange : Rider's weight: 50~70kg

Black : Rider's weight: 70~90kg

Grey : Rider's weight: 90~110kg


STEMS

HANDLEBARS

SEATPOSTS

CARBON SERIES

ACCESSORIES



PATENTED ANTI SIDEPLAY SYSTEM



Based on the patented quadrilateral and one piece forged stanchion, SATORI suspension seatpost is utterly immune to sideplay. The coil spring provides just the right amount of compression and rebound damping, also the pre-load can be easily adjusted to rider's weight. By adding SATORI suspension seatpost you'll ride faster, longer and less fatigue, all in the sense of great comfort.



HARMONY SA

MATERIAL	FORGED / AL6061
OFF SET	3 mm
ANGLE	-5° ~ +18°
DIAMETER	Ø27.2 / Ø30.9 / Ø31.6 mm
LENGTH	300 / 350 mm
TRAVEL	40 mm
WEIGHT	634 g (Ø31.6 x 350)



ELEGANCE-LT

MATERIAL	FORGED / AL6061
OFF SET	18 mm
ANGLE	-5° ~ +18°
DIAMETER	Ø27.2 / Ø30.9 / Ø31.6 / Ø34.9 mm
LENGTH	300 / 350 mm
TRAVEL	40 mm
WEIGHT	688.5 g (Ø34.9 x 400)



MAT BK



MAT SV



SHINY BK



SHINY SV



STEMS

HANDLEBARS

SEATPOSTS

CARBON SERIES

ACCESSORIES

HARMONY-LT2

MATERIAL	FORGED / AL6061
OFF SET	10 mm
ANGLE	-5° ~ +18°
DIAMETER	Ø27.2 / Ø30.9 / Ø31.6 / Ø34.9 mm
LENGTH	300 / 350 mm
TRAVEL	40 mm
WEIGHT	492.5 g (Ø27.2 x 350)

ANTI
SIDEPLAYCoil
SPRING

XOPIC2

MATERIAL	FORGED / AL6061
OFF SET	0 mm
ANGLE	-5° ~ +18°
DIAMETER	Ø27.2 / Ø30.9 / Ø31.6 / Ø34.9 mm
LENGTH	300 / 350 / 400 / 450 mm
TRAVEL	40 mm
WEIGHT	497.5 g (Ø30.9 x 350)

ANTI
SIDEPLAYCoil
SPRING

IMPEND-LF

MATERIAL	FORGED / AL6061
OFF SET	17 mm
ANGLE	-5° ~ +18°
DIAMETER	Ø27.2 mm
LENGTH	300 / 350 mm
TRAVEL	40 mm
WEIGHT	526 g (Ø27.2 x 350)

ANTI
SIDEPLAYCoil
SPRING

MAT BK



MAT SV



SHINY BK



SHINY SV



STEMS

HANDLEBARS

SEATPOSTS

CARBON SERIES

ACCESSORIES

**NEW**

TRIDENT FIREFLY



MAT BK

- Integrated Light. Certified Safety. Smarter Visibility.

Specification:

Cable : 2 wires (PWR, GND)

Installation : -17°

Waterproof : IPX5

Power input Range : DC 12V (0.6W) / DC 13.5V (0.6W)

Comply to German StVZO K-mark regulation

MATERIAL	AL6066
OFF SET	0 mm
ANGLE	- 5° ~ +18°
DIAMETER	Ø27.2 / Ø30.9 / Ø31.6 / Ø34.9 mm
LENGTH	350 / 400 mm
WEIGHT	317g (Ø27.2*400 mm)

**NEW**

ASTRO·S³



MAT BK

- Multi-Function by Design. Ready for S3.

MATERIAL	AL6066
OFF SET	20 mm
ANGLE	- 5° ~ +18°
DIAMETER	Ø27.2 / Ø30.9 / Ø31.6 / Ø34.9 mm
LENGTH	350 / 400 mm
WEIGHT	356 g

S³

OPTIONAL

S³ ADAPTORS³ LIGHT MOUNT



SORATA LT



MAT BK

MATERIAL	AL6066
OFF SET	10 mm
ANGLE	-5° ~ +18°
DIAMETER	Ø31.6 / Ø34.9 mm
LENGTH	334 x 475 mm
WEIGHT	660 g

SORATA



MAT BK

MATERIAL	AL6066
OFF SET	20 mm
ANGLE	-5° ~ +18°
DIAMETER	Ø31.6 / Ø34.9 mm
LENGTH	280 ~ 440 mm
WEIGHT	567 g (34.9)

SORATA 0



MAT BK

MATERIAL	AL6066
OFF SET	0 mm
ANGLE	-5° ~ +18°
DIAMETER	Ø31.6 / Ø34.9 mm
LENGTH	280 ~ 440 mm
WEIGHT	567 g (34.9)


ANTI
SIDEPLAY

Coil
SPRING

◀

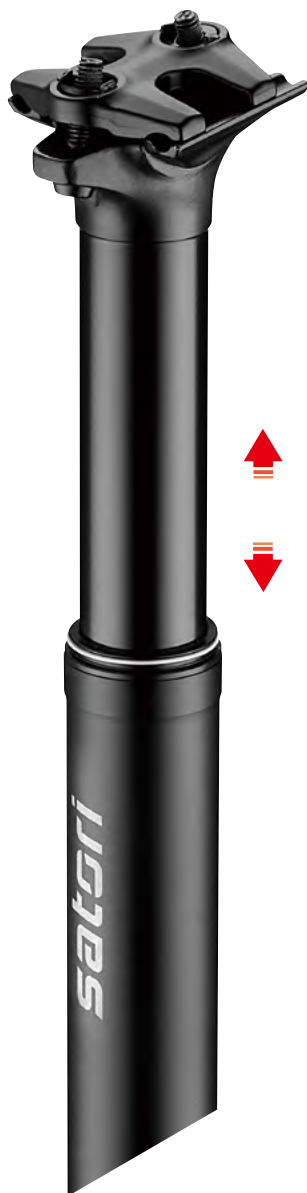
STEMS

HANDLEBARS

SEATPOSTS

CARBON SERIES

ACCESSORIES



ATLAS MAX



MAT BK

MATERIAL	AL7050
OFF SET	0 mm
ANGLE	- 5° ~ +18°
DIAMETER	Ø34.9 mm
LENGTH	455 mm / T:150 mm 496 mm / T:175 mm 559 mm / T:200 mm
WEIGHT	574 g (T:150 mm) 612 g (T:175 mm) 672 g (T:200 mm)



ATLAS LIFT



MAT BK

MATERIAL	AL6066
OFF SET	0 mm
ANGLE	- 5° ~ +18°
DIAMETER	Ø30.9 / Ø31.6 mm
LENGTH	413 mm / T:80 mm 456 mm / T:100 mm
TRAVEL	SUSPENSION TRAVEL: 30 mm
WEIGHT	572 g (T:80 mm) 605 g (T:100 mm)



ATLAS LITE



MAT BK

MATERIAL	3D FORGED / AL7050
OFF SET	0 mm
ANGLE	-5° ~ +18°
DIAMETER	Ø27.2 mm
LENGTH	390 mm / Travel 80 mm 390 mm / Travel 100 mm
TRAVEL	
WEIGHT	599.5 g (Ø27.2, T:100)

ATLAS PRO



MAT BK

AL7050
0 mm
- 5° ~ +18°
Ø30.9 / Ø31.6 mm
307 mm / T:80 mm 350 mm / T:100 mm 403 mm / T:125 mm 455 mm / T:150 mm 505 mm / T:175 mm 560 mm / T:200 mm
462 g (T:80 mm) 489.4 g (T:100 mm) 520.3 g (T:125 mm) 550.7 g (T:150 mm) 573.2 g (T:175 mm) 607.9 g (T:200 mm)

ATLAS PRO S



MAT BK

AL7050
0 mm
- 5° ~ +18°
Ø30.9 / Ø31.6 mm
429 mm / T:80 mm 473 mm / T:100 mm
SUSPENSION TRAVEL: 30 mm
580 g (T:80 mm) 603 g (T:100 mm)



STEMS

HANDLEBARS

SEATPOSTS

CARBON SERIES

ACCESSORIES



SERPENT

- Light, Sturdy 3D Forged Seat Post With Sleek, Slithering Good Looks.

MATERIAL	3D FORGED / AL6061
OFF SET	24 mm
ANGLE	-5° ~ +18°
DIAMETER	Ø27.2 / Ø30.9 / Ø31.6 mm
LENGTH	300 / 350 / 400 mm
WEIGHT	256.5 g (Ø27.2 x 350)



MAT BK



TRIDENT OF

MATERIAL	TUBE AL6066 or CARBON
OFF SET	18 mm
ANGLE	-5° ~ +18°
DIAMETER	Ø27.2 / Ø30.9 / Ø31.6 / Ø34.9 mm
LENGTH	305 / 355 / 405 mm
WEIGHT	288 g (Ø27.2 x 355, AL6066)



TRIDENT

MATERIAL	TUBE AL6066 or CARBON
OFF SET	0 mm
ANGLE	-5° ~ +18°
DIAMETER	Ø27.2 / Ø30.9 / Ø31.6 / Ø34.9 mm
LENGTH	300 / 350 / 400 mm
WEIGHT	307 g (Ø27.2 x 350, AL6066)



MAT BK



MAT SV



SHINY BK



SHINY SV



ACF



CAMBER

MATERIAL	TUBE AL6066 or CARBON
OFF SET	24 mm
CRADLE	43 x 38
ANGLE	-5° ~ +18°
DIAMETER	Ø27.2 / Ø30.9 / Ø31.6 / Ø34.9 mm
LENGTH	315 / 365 / 415 mm
WEIGHT	311.5 g (Ø31.6 x 365, AL6066)

COMET

MATERIAL	TUBE AL6066 or CARBON
OFF SET	0 mm
CRADLE	43 x 35
ANGLE	-5° ~ +18°
DIAMETER	Ø27.2 / Ø30.9 / Ø31.6 / Ø34.9 mm
LENGTH	300 / 350 / 400 mm
WEIGHT	370.5 g (Ø34.9 x 350, AL6066)

ASTRO

MATERIAL	TUBE AL6066 or CARBON
OFF SET	20 mm
CRADLE	43 x 35
ANGLE	-5° ~ +18°
DIAMETER	Ø27.2 / Ø30.9 / Ø31.6 / Ø34.9 mm
LENGTH	300 / 350 / 400 mm
WEIGHT	342 g (Ø31.6 x 350, AL6066)



MAT BK



MAT SV



SHINY BK



SHINY SV



ACF



MAT BK



MAT SV



SHINY BK



SHINY SV



ACF

NEW**S' PRESSO-P**

Remote Lever

**S' PRESSO-B**

Remote Lever

For those who run 1X, we present you a new dropper post remote lever.

- Positioned under handlebar for easier thumb access and clean look
- Adjustable lever position

**S' PRESSO-A**

Remote Lever



HORIZON BOW CARBON



DEVIANT BOW CARBON

HORIZON BOW CARBON



DEVIANT BOW CARBON



MATERIAL	Full CARBON
CENTER DIA	Ø31.8 mm
WIDTH	720 / 740 / 760 / 780 mm
RISE	7 mm
BACK SWEEP	9°
WEIGHT	213 g (W:740)

MATERIAL	Full CARBON
CENTER DIA	Ø31.8 mm
WIDTH	720 / 740 / 760 / 780 mm
RISE	12 mm
BACK SWEEP	9°
WEIGHT	237 g (W:780)



EVO 35 CARBON XL



EVO 35 CARBON XS

EVO 35 CARBON XL



EVO 35 CARBON XS



MATERIAL	Full CARBON
CENTER DIA	Ø35 mm
WIDTH	720 / 740 / 780 / 800 mm
RISE	40 mm
BACK SWEEP	7°
WEIGHT	234.5 g (W:800)

MATERIAL	Full CARBON
CENTER DIA	Ø35 mm
WIDTH	720 / 740 / 780 / 800 mm
RISE	20 mm
BACK SWEEP	7°
WEIGHT	231 g (W:800)



Ø35



Ø35



STEMS

HANDLEBARS

SEATPOSTS

CARBON SERIES

ACCESSORIES



NEW

S³ ADAPTOR

MAT BK



NEW

S³ LIGHT MOUNT

MATERIAL	Engineering Plastic
PRODUCT COMPATIBILITY	S ³ Interface

MATERIAL	Alloy
PRODUCT COMPATIBILITY	S ³ Interface

Faceplate adaptor for
INTUVIA 100

MAT BK

Faceplate adaptor for
KIOX 300

MAT BK

S³ CAP

MODEL	
MATERIAL	Engineering Plastic
PRODUCT COMPATIBILITY	671B / 380F / 379 / EL-012

MATERIAL	Engineering Plastic
PRODUCT COMPATIBILITY	671B / 380F / 379 / EL-012

Faceplate	
Alloy	
VIPER 0, NEW VIPER	
RANA, MODERATOR	



671B CAP



380F CAP



379 CAP

MODEL	Light mount Faceplate
MATERIAL	Alloy
PRODUCT COMPATIBILITY	PYTHON
	FASTBACK 20 / 35
	HATCHBACK, SIDEWINDER
	SHORTY ICR (31.8 mm), ET5
REMARK	Pitch:10.3 mm

MODEL	Light mount Faceplate
MATERIAL	Alloy
PRODUCT COMPATIBILITY	UP3e / UP3

MODEL	Light mount Faceplate
MATERIAL	Alloy
PRODUCT COMPATIBILITY	UP3e / UP3

Pitch:10.3 mm

Pitch:10.3 mm



STEMS

HANDLEBARS

SEATPOSTS

CARBON SERIES

ACCESSORIES



EL-045



EL-012



EL-017



EL-023

MODEL	Light mount for SLINGSHOT	Light mount adaptor	Light mount adjustable adaptor	Countersunk Lock screw
MATERIAL	Engineering Plastic	Alloy	Engineering Plastic	Stainless steel
PRODUCT	SLINGSHOT	RANA, URSA	380F CAP	For all light mount and EL-017
		VIPER 0, VIPER 0 35	379 CAP	
		NEW VIPER,	EL-012, EL-045	
		MODERATOR	671B CAP	
REMARK	Pitch:10.3 mm	Pitch:10.3 mm		



EL-019



SPR-010



EL-010

MODEL	Transit spacer for ACROS	SPACER	DUST CAP
MATERIAL	Engineering Plastic	Engineering Plastic	Alloy
PRODUCT COMPATIBILITY	FASTBACK 20 / 35	FASTBACK 20 / 35	FASTBACK 20 / 35
	DELTA series	DELTA series	DELTA series
	SIDEWINDER	HATCHBACK, SIDEWINDER	HATCHBACK, SIDEWINDER
		EZ-X	EZ-X
REMARK	Specialized for the stem to compatible for the normal stem to match with ACROS AICR plastic parts	Options:5 mm / 10 mm	



EL-018



EL-025



EL-007

MODEL	Light mount for CATAMARAN	S ³ plug for UP3	Di2 battery adapter
MATERIAL	Engineering Plastic	Engineering Plastic	Engineering Plastic
PRODUCT COMPATIBILITY	CATAMARAN	UP3, UP3e	
REMARK	35 mm Bar bore, Pitch:10 / 20 mm		27.2 mm seat post



STEMS

HANDLEBARS

SEATPOSTS

CARBON SERIES

ACCESSORIES

		Light mount	Light mount adaptor	Countersunk Lock screw	Phone mount	ACROS ICR
	BELUGA	S ³ Light mount	EL-017	EL-023	N/A	AZX-585
	MOBY DEE	696B CAP	EL-017	EL-023	On Top	AZX-585
	SLINGSHOT	EL-045	EL-017	EL-023	On Top	AZX-585
	PYTHON	671B CAP	EL-017	EL-023	On Top	AZX-585
	CATAMARAN	EL-018	EL-017	EL-023	N/A	AZX-585
	RANA	EL-012	EL-017	EL-023	S ³ CAP	AZX-727
	VIPER 0 35	EL-012	EL-017	EL-023	N/A	AZX-581
	URSA	EL-012	EL-017	EL-023	N/A	AZX-581
	NEW VIPER	EL-012	EL-017	EL-023	S ³ CAP	AIX-526
	VIPER 0	EL-012	EL-017	EL-023	S ³ CAP	AZX-581
	SIDEWINDER	671B CAP	EL-017	EL-023	On Top	AZX-581
	FASTBACK 20	671B CAP	EL-017	EL-023	On Top	AZX-581

FSA ICR	TOKEN ICR	Transit spacer for ACROS	DUST CAP	SPACER	Display holder
HS-HL-01	TK3266-SC2	N/A	N/A	N/A	N/A
HS-HL-01	TK3266-SC2	N/A	N/A	N/A	EL-038 / EL-034
HS-HL-01	TK3266-SC2	N/A	N/A	N/A	EL-038 / EL-034
HS-HL-01	TK3266-SC2	N/A	N/A	N/A	EL-038 / EL-034
HS-HL-01	TK3266	N/A	N/A	N/A	EL-038 / EL-034
N/A	TK3266-SC1	N/A	N/A	N/A	EL-038 / EL-034
N/A	TK2156 TK2166	N/A	N/A	N/A	EL-038 / EL-034
N/A	TK2156 TK2166	N/A	N/A	N/A	EL-038 / EL-034
N/A	TK2156 TK2166	N/A	N/A	N/A	EL-038 / EL-034
N/A	TK2156 TK2166	N/A	N/A	N/A	EL-038 / EL-034
NO.69 / 56 / SRS / Middle / HL-Delta	TK2156 TK2166	EL-019	EL-010	SPR-010	EL-038 / EL-034
NO.69 / 56 / SRS / Middle / HL-Delta	TK2156 TK2166	EL-019	EL-010	SPR-010	EL-038 / EL-034



STEMS

HANDLEBARS

SEATPOSTS

CARBON SERIES

ACCESSORIES



STEMS

HANDLEBARS

SEATPOSTS

CARBON SERIES

ACCESSORIES

		Light mount	Light mount adaptor	Countersunk Lock screw	Phone mount	ACROS ICR
	FASTBACK 35	671B CAP	EL-017	EL-023	On Top	AZX-581
	UP3	380F / 379 CAP	EL-017	EL-023	EL-025	N/A
	SHORTY ICR (Ø31.8/35mm)	671B CAP (31.8mm only)	EL-017 (31.8mm only)	EL-023 (31.8mm only)	On Top	AZX-585
	ET-5	671B CAP	EL-017	EL-023	On Top	N/A
	HATCHBACK ICR	671B CAP	EL-017	EL-023	On Top	AZX-585
	HATCHBACK	671B CAP	EL-017	EL-023	On Top	N/A
	MODERATOR	EL-012	EL-017	EL-023	On Top	N/A
	COBRA (only for Ø31.8mm)	380F / 379 CAP	EL-017	EL-023	N/A	N/A
	TURN UP (only for Ø31.8mm)	380F / 379 CAP	EL-017	EL-023	N/A	N/A
	EZ-X ICR	N/A	N/A	N/A	On Top	AZX-585
	EZ-X	N/A	N/A	N/A	On Top	N/A

FSA ICR	TOKEN ICR	Transit spacer for ACROS	DUST CAP	SPACER	Display holder
NO.69 / 56 / SRS / Middle / HL-Delta	TK2156 TK2166	EL-019	EL-010	SPR-010	EL-038 / EL-034
N/A	N/A	N/A	N/A	N/A	EL-038 / EL-034
HS-HL-01	TK3266-SC2	N/A	N/A	N/A	EL-038 / EL-034
N/A	N/A	N/A	N/A	N/A	EL-038 / EL-034
HS-HL-01	TK3266-SC2	N/A	N/A	N/A	EL-038 / EL-034
N/A	N/A	N/A	EL-010	SPR-010	EL-038 / EL-034
N/A	N/A	N/A	N/A	N/A	EL-038 / EL-034
N/A	N/A	N/A	N/A	N/A	EL-038 / EL-034
N/A	N/A	N/A	N/A	N/A	EL-038 / EL-034
HS-HL-01	TK3266-SC2	N/A	N/A	N/A	N/A
N/A	N/A	N/A	EL-010	SPR-010	N/A



STEMS

HANDLEBARS

SEATPOSTS

CARBON SERIES

ACCESSORIES



satori

18 KUANG FU NORTH ROAD HSINCHU INDUSTRIAL PARK
HU KO HSINCHU HSIEN, TAIWAN.
TEL: 886-3-5983721 FAX: 886-3-5981861



www.facebook.com/satoribike



satoribike.com